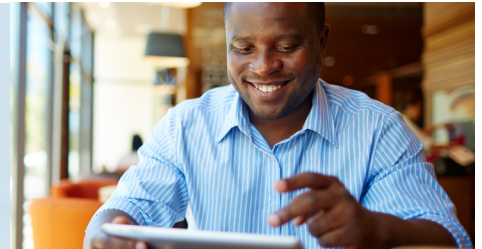




## The Hartford At Work®



### Overview

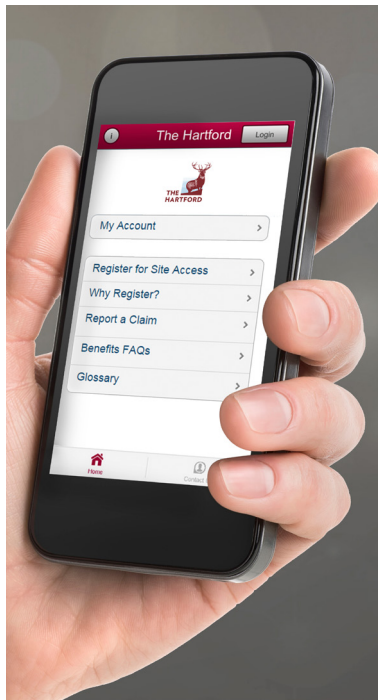
The Hartford At Work® is a valuable resource designed to provide you with increased convenience and greater accessibility to The Hartford. This robust web portal helps you manage your benefits by giving you access to important benefits information and personal data with convenience, ease and security.

### Tap into the benefit of secure 24/7 access

Here are some of the features you can access by logging onto

**[WWW.THEHARTFORDATWORK.COM](http://WWW.THEHARTFORDATWORK.COM)** online, or through your smartphone or tablet:

- **Up-to-date account information** - With 24/7 access, you log in with a user ID and password for secure account information.
- **Check personal health information** - Find out the status of the application you filed for medical underwriting.
- **Start a claim** - Most users can file a Short-term Disability (STD) or Long-term Disability (LTD) claim from this starting point. Be sure to check out the "How to File a Claim" videos for STD, LTD and Leave which are also available on the website.
- **Check the status of a claim** - There's no longer the need to call the customer contact center for the status of a claim. You can instantly check online or through The Hartford's "My Benefits" mobile app for a claim you've filed and stay up-to-date on the status with email communications.
- **Click-to-Chat** - This convenient feature is accessible on the website home page and allows you to connect with a claims representative who can answer questions in real-time.
- **Claim Notes** - You can view an activity log of your claim status, including receipt of medical information, phone calls, etc.



- **Claim alerts** - Enhanced real-time communications regarding claim status sent to you via regular email updates. Depending on preferences, alerts may be sent for claim acknowledgment, follow-up tasks, claim payments, and more.
- **Direct deposit** - If the Hartford issues your benefit payments, you can set up a direct deposit account that lets you have disability payments automatically deposited in your checking or savings accounts. You will receive email notifications when a payment is issued and can view paperless explanation of benefits online.
- **Access forms** - You can view and print commonly used forms, some of which are interactive and available in Spanish.
- **My profile** - This allows you to input and update your password and email preferences.
- **Leave of absence capabilities<sup>1</sup>** - If applicable, you can initiate your leave of absence online, report missed work hours and check the status of a leave, as well as view and print leave details and update existing leaves.



The app can be downloaded for free from a mobile device by searching for **“My Benefits at The Hartford”** at the Apple® App Store® or Google Play™ Store.

Log onto [WWW.THEHARTFORDATWORK.COM](http://WWW.THEHARTFORDATWORK.COM) today, or for more information, please contact your **Hartford representative**.

### Prepare. Protect. Prevail. With The Hartford.®

The Hartford® is The Hartford Financial Services Group, Inc. and its subsidiaries including issuing companies Hartford Life Insurance Company and Hartford Life and Accident Insurance Company. Home office is Hartford, CT.

App Store® is a registered service mark of Apple Inc. Google Play™ Store is a trademark of Google Inc.

<sup>1</sup> Online/mobile Leave capabilities are only available if The Hartford administers your employer's leave.

Policy Form Disclosure: Disability Form Series includes GBD-1000, GBD-1200, or state equivalent.

6104 NS 02/17 © 2017 The Hartford Financial Services Group, Inc. All rights reserved.



Business Insurance  
Employee Benefits  
Auto  
Home